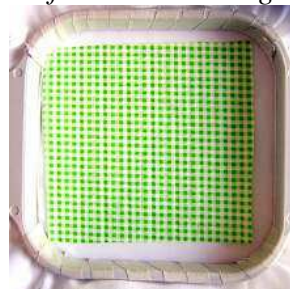




Important Read: Appliqué Information: *The first color block in each of these designs is an outline for placement of fabric. The second color block is tack down of the fabric. You should use the same color for both the first and second color block, and it should be the same color you plan to use for the satin column outline of*



the animal. When placing the fabric for the appliqué, you may want to apply a spray adhesive to the back. We found that we were able to simply lay the fabric flat without using a spray adhesive and it seemed to work fine.



After the tack down is sewn, you should stop your machine and cut away excess fabric. Cut very close to the zigzag stitching, but do not cut through any stitches.



You may use appliqué scissors for this, or we found that small embroidery scissors work wonderfully. After the tack down stitching is sewn, the rest of the color blocks will finish the design.

Baby Rag Quilt Instructions and Pattern Pieces

Materials Needed:

- 1 yd. white poplin or cotton fabric
- 1/8 yd. of print fabric for each block (2 yds. of print fabric total)
- 1 1/2 yds. of fabric for the back of the quilt (flannel works nicely)
- 1 1/2 yds. of quilt batting
- 1 yd. of medium-weight cut-away stabilizer
- 6 yds. of quilt binding
- Baby Applique embroidery designs by Golden Needle Designs

1. Print out instructions with pattern pieces.
2. Cut out pattern pieces and set aside for later.
3. Sew out 16 baby appliqué embroidery designs on white fabric using medium weight cut-away stabilizer.
4. After the designs are sewn out, cut away excess fabric and press with a warm iron.
5. Pin pattern piece A to the fabric with the design and cut out. Do this with all 16 embroidered designs.
6. From print fabric cut out 4 pieces of pattern B for each block (64 pieces total). Cut out 2 pieces of pattern piece C (top & bottom border) for each block (32 pieces total), and cut out 2 pieces of pattern piece D (side borders) for each block (32 pieces total).
7. Pin the corner pieces (Piece B) to each corner, right sides together and sew using a 1/2" seam allowance.



8. Cut away outside corners of printed fabric corners as shown below:



9. Using a warm iron, press the seams towards the outside:



Block will look like this:



10. Next sew the top and bottom borders (Piece C) to the top and bottom of the block using a 1/2" seam allowance. Then press the seams towards the outside.



11. Sew on the side borders using a 1/2" seam allowance, and again press the seams towards the outside:



Block will now look like this:



Repeat this process for all 16 blocks.

12. After all blocks are sewn, cut a 3/8" x 3/8" square from each corner of each block as shown below:



13. Next decide how you want your blocks arranged. The quilt will be 4 blocks wide by 4 blocks high.

14. Sew the blocks together by rows of 4, using a 1/2" seam allowance. **When sewing the blocks together, make sure the seam is on the outside of the quilt.**

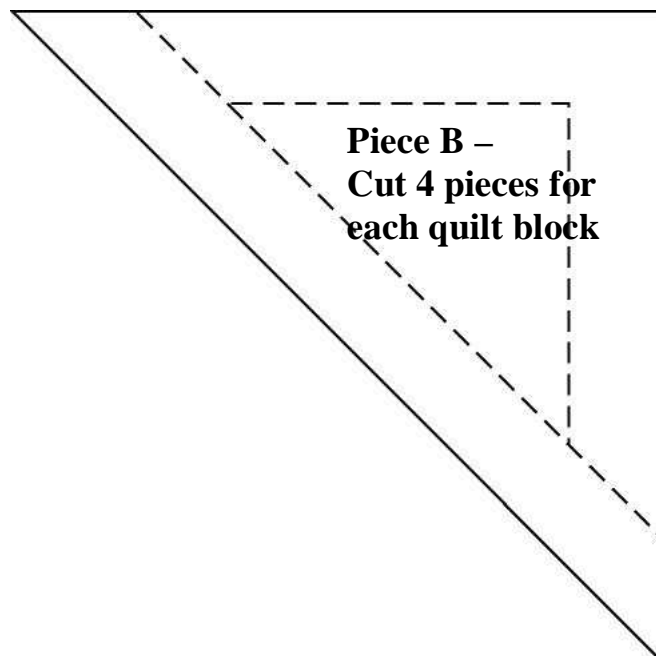
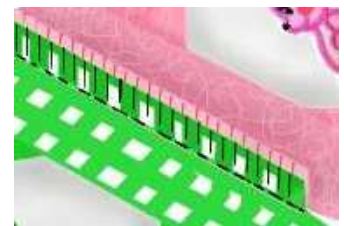
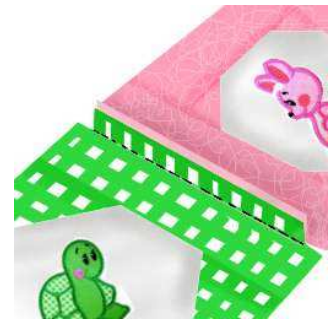
Then sew the rows together, again with the seams on the outside. Press the seams open as you go.

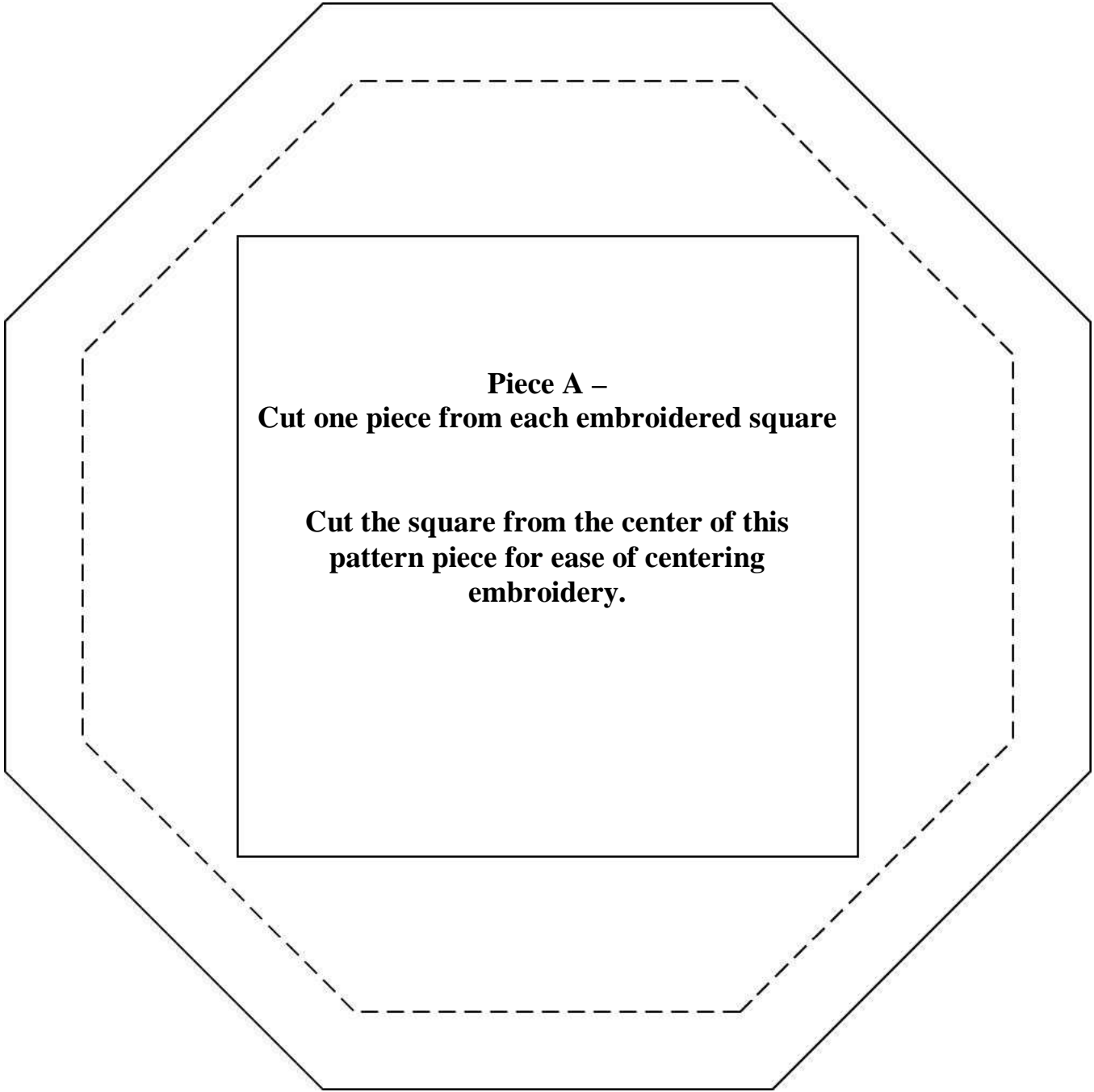
15. After all the blocks are sewn together and press, lay the fabric you chose for the back of the quilt out flat. Place the batting on top of the fabric, then place the quilt top on top. Pin all layers together at the corners of each block. Sewing through all layers, sew along outside seams of each block.

16. After quilting is finished, cut away excess fabric and backing from around the edge of the quilt.

17. Sew quilt binding around outside edge.

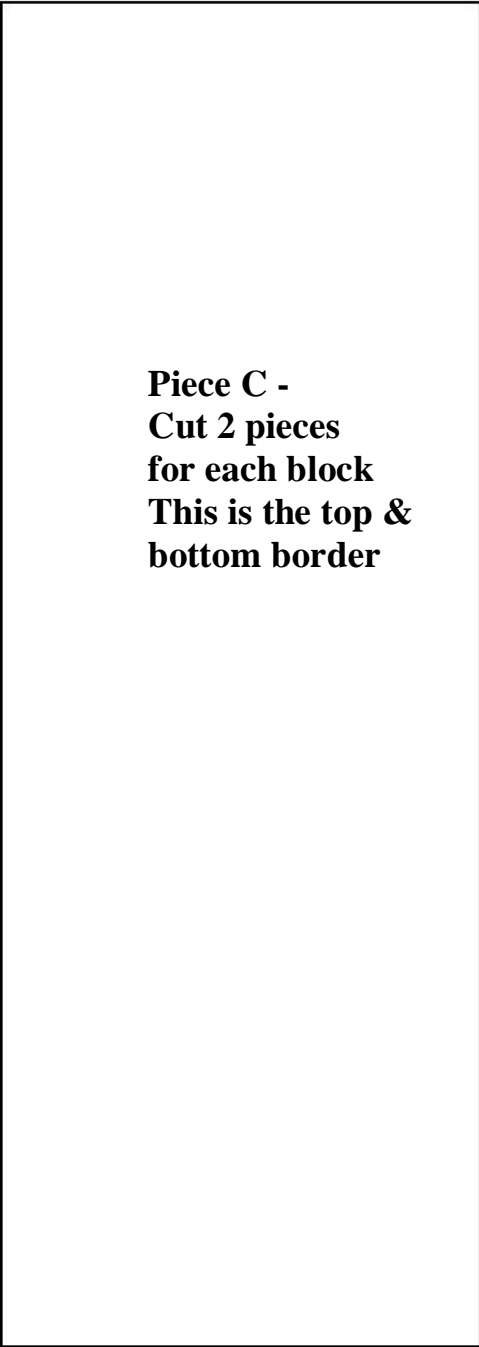
18. Cut slits in all top seams about 1/4" apart. (See the picture to the right.) This will create the "rag" look. If you prefer a more "frayed" look, such as shown in the pictures of our quilt, simply brush the edges of the seams with a stiff bristled brush.



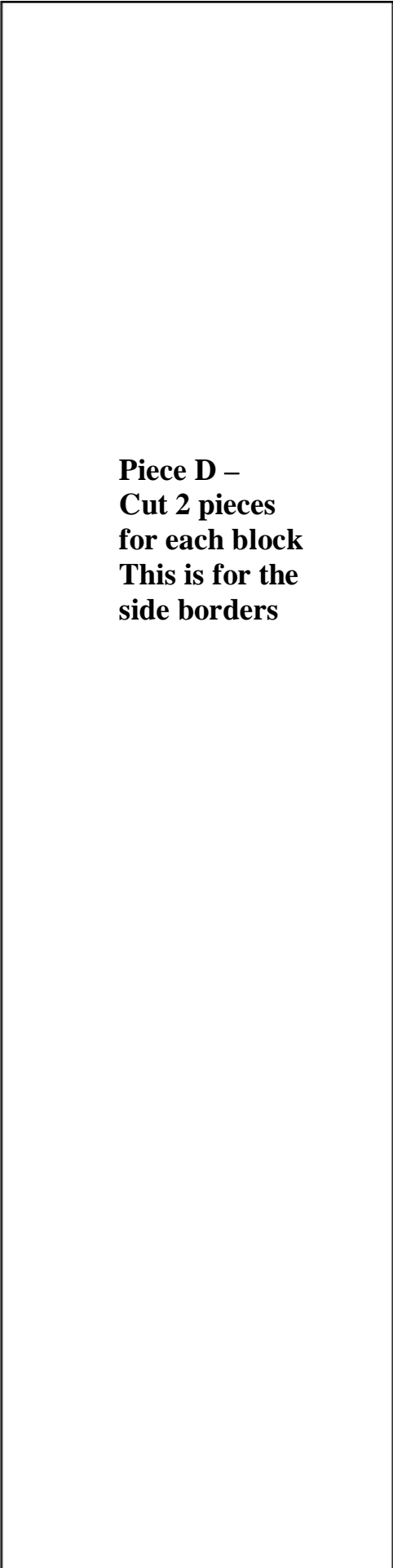


**Piece A –
Cut one piece from each embroidered square**

**Cut the square from the center of this
pattern piece for ease of centering
embroidery.**



**Piece C -
Cut 2 pieces
for each block
This is the top &
bottom border**



**Piece D –
Cut 2 pieces
for each block
This is for the
side borders**